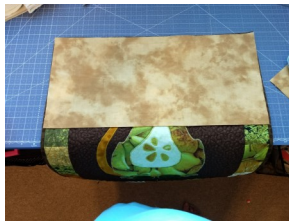


How to Put a Hanging Sleeve on a Quilt

A hanging sleeve is a tube of fabric affixed to the backside of a quilt or wall hanging. A dowel or rod put through the hanging sleeve allows the quilt to be displayed on a wall. The tube may be any cotton fabric and muslin is frequently used. However, most quilters like to use the same fabric as the backing, as the sleeve then blends in to its background.



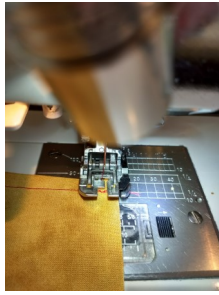
1. Measure the width of across the top of the quilt. Cut a strip of fabric 8.5" x the measurement across the top. You may have to sew strips together to get the width of the quilt top. 8.5" x 18" is this sample.



2. Fold over a 1/4" and press down the side of the quilt sleeve. This would be the 8.5" side of the sleeve. Fold over another 1/4" and press again. Repeat on the other side of the sleeve. Stitch it in place. Use thread that matches the sleeve or use contrasting for another touch.



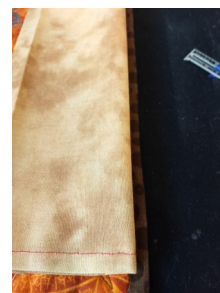
3. With wrong sides together stitch a fat 1/4" seam the length of the strip. Press this seam open.



4. Position the strip, centered, across the top of the quilt, and about 1" below the finished binding edge. The seam of the sleeve should lie against the back of the quilt.



5. This step is designed to create fullness in the sleeve to accommodate the dowel. Push the front of the tube up until the top edge covers a bit less than half of the binding. Fold up the bottom of the sleeve about 3/4" and press, be careful not to press out your original fold.



6. Pin or glue in place. Use a temporary basting glue, that will wash out, to hold in place. Let it dry. If you use pins, be careful, you can get stuck or scratched. Also, thread can get tangled up around the pins.



7. Slip stitch the sleeve in place on the back of the quilt. Try to catch the batting in your stitches, as this will prevent drag on the quilt when it is hung. No stitches should come through on the front. Start on the right side of the sleeve side (4") right before the seam and slip stitch the back of the sleeve to the quilt top back. When you get to the corner, use a tailor tack stitch (3 stitches in the same hole) and reinforce the corner. Continue to stitch across the top of the sleeve. When you get to the next corner, repeat the tailor's stitch and continue down the left side of the sleeve, tacking down the back of the sleeve. Stop at the crease that you ironed in step 5. Reinforce this corner and continue along the crease to the other side. Reinforce the bottom corner and then knot your thread when you get to where you begin. A tailor's stitch will knot this off too. Bury your thread and cut.



There are many variations of hanging sleeves. Find the one that works best to you or adapt this one for you. You can also purchase pre-made sleeve, usually muslin or black. They come in packages that have about 108" in length. These work great when you are in a hurry, but usually don't match your quilting. Very good for when you need a temporary sleeve.